



REPUBLIC OF SOMALILAND
MINISTRY OF PLANNING AND NATIONAL DEVELOPMENT
Central Statistics Department



Monthly Consumer Price Index

December 2018



Methodology

Methodology

This publication provides monthly Consumer Price Indices of Somaliland composite which is based on two main market baskets of Hargeisa urban households and 124 outlets in Hargeisa. However, the current Consumer Price Index was constructed the results of the 2012 **Somaliland Household budget survey (SHS)**. During the exercise of (SHS), the markets were incorporated into the Index. Only the household final consumption expenditure data for the Hargeisa domain were analyzed and used to compute the Somaliland CPI weights. The CPI is now classified as an international standard, referring to: ***Classification of Individual Consumption According to Purpose (COICOP)***.

At the ***elementary aggregate*** (EA) level, the indices were computed using the Jevons (Geometric Mean) method for all items within the elementary aggregates. The modified Laspeyres index formula is used to compute ***higher level indices***. The National CPI is computed as a weighted average of the two Markets, outlets mentioned above and indices are obtained from the ***elementary aggregate*** (EA) level.

Computation of the Monthly Inflation (M-o-M):

Monthly Inflation is calculated as the percentage change between the CPI of the current month and the CPI of the previous month.

Computation of the Annual Inflation (Y-o-Y):

Annual Inflation is calculated as the percentage change between CPI of the current month and the CPI of the same month but for the previous year.

SOMALILAND CONSUMER PRICE INDEX

The Central Statistics Department of the Ministry of Planning & National Development (MoP&ND), has released the Consumer Price Index (CPI) for the Month of December 2018 (Base year 2012=100).

Highlights of CPI, December 2018.

1. Annual Inflation

The Annual Headline Inflation for the year ending December 2018 decline at 8.0 percent compared to the 8.2 percent recorded similar month Inflation.

The **Annual Food Crops Inflation** increase 3.4 percent for the year ending December 2018 compared to 2.5 percent recorded for the similar month. The driver of Annual Food Crops Inflation were **Orange** increase to 24.8 percent for the year ending December 2018 compared to the 14.4 percent registered similar month of the previous year. In addition, **Manderine** inflation registered increase to 4.1 percent for the year ending December 2018 compared to the minus (3.8) percent recorded for the corresponded similar month of the Previous year. Similarly, **Canned fruits** inflation Increase 20.0 percent for the ending year ending December 2018 compared to 17.2 percent corresponded similar month of the previous year. On the other hand, mainly due to **Green Pepper** inflation increase 6.0 percent for the ending year ending December 2018 compared to 3.7 percent corresponded similar month of the previous year.

The **Annual Core** inflation also decline to 8.3 percent for the year ending December 2018 compared to the 8.5 percent Corresponding month of the previous year. This was driven by the **Sorghum grain** inflation decline that registered (9.1) percent the ending December 2018 compared to minus (5.2) percent recorded during the Corresponding similarly month of the previous year. In addition **Sugar** inflation decline to (6.9) percent for the year ending December 2018 compared to the 6.5 percent recorded for the Corresponding similar month of the previous year. Similarly, **Services** inflation decline to 6.2 percent for the year ending December 2018 compared to the 10.5 percent recorded for the Corresponding similar month.

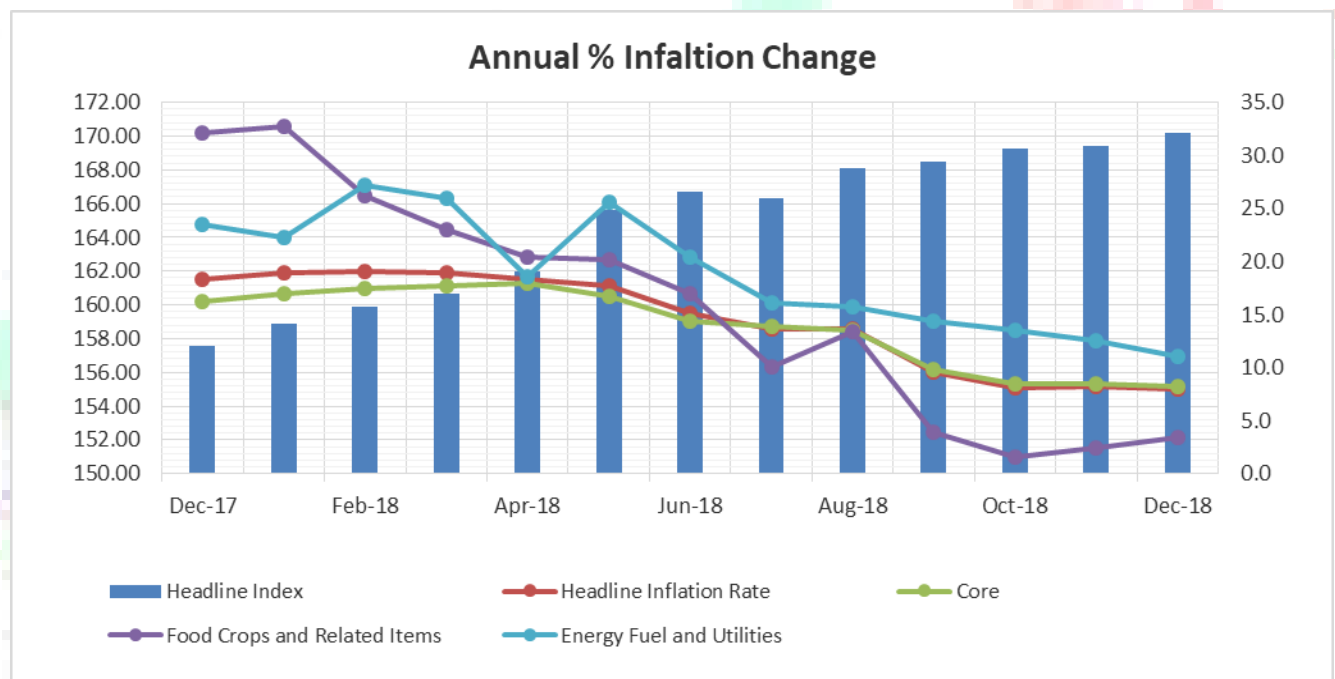
In addition, the **Annual Energy Inflation**, Fuels and Utilities (EFU) decline to 11.1 percent for the year ending December 2018 compared to 12.5 percent recorded Corresponding month of the previous year. The drivers were **Charges - Use of Electricity** inflation decline that 9.6 percent for the year ending December 2018 compared to 25.0 percent recorded for the Corresponding similar month of the preceding year. In addition, the **Charcoal** inflation that decline to 14.1 percent for the year ending December 2018 compared 17.2 percent recorded in Corresponding similar month. Similarly, the **Gas (natural and liquefied)** Inflation decline by 11.1 percent in December 2018 compared 14.0 percent recorded in Corresponding similar month of the previous year.

2. Monthly Inflation

The Monthly Headline Inflation for December 2018 increased by 0.4 percent compared 0.1 percent recorded in November 2018. The **Food Crop & Related items** monthly Inflation increased by 1.7 percent in December 2018 compared (0.4) percent recorded in November 2018. In addition **Core** monthly inflation that decline 0.2 percent during December 2018 compared the 0.3 percent recorded in November 2018. Similarly, the Monthly **Energy Fuel & utilities** Inflation increased by 1.4 percent for the month of December 2018 compared (0.9) percent recorded during November 2018.

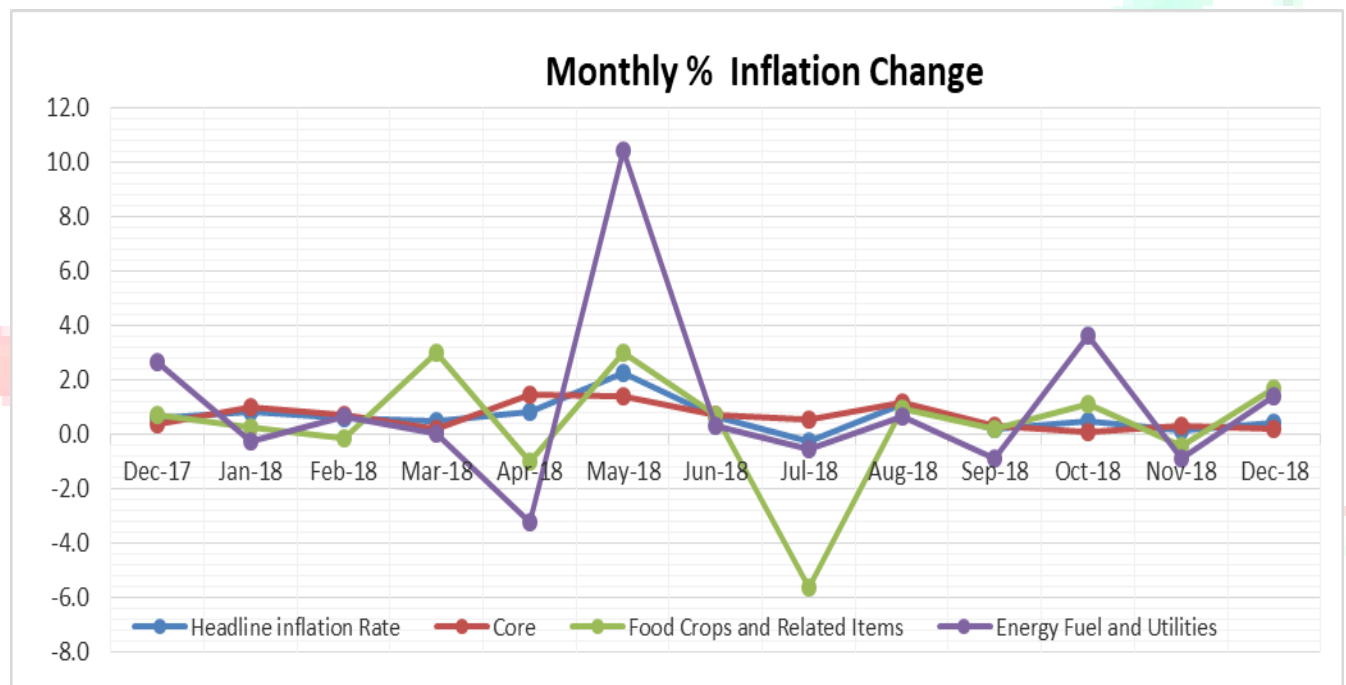
NB: Annual Inflation based on comparison of current year Vs last year's similar month the detailed Monthly Inflation figures per Division are presented in below Annex three.

Graph 1: Somaliland Headline Index and Annual Inflation rates for 3 major components, December 2017 –December 2018: (2012 = 100)



Source: CPI unit/Economic Section/CSD.

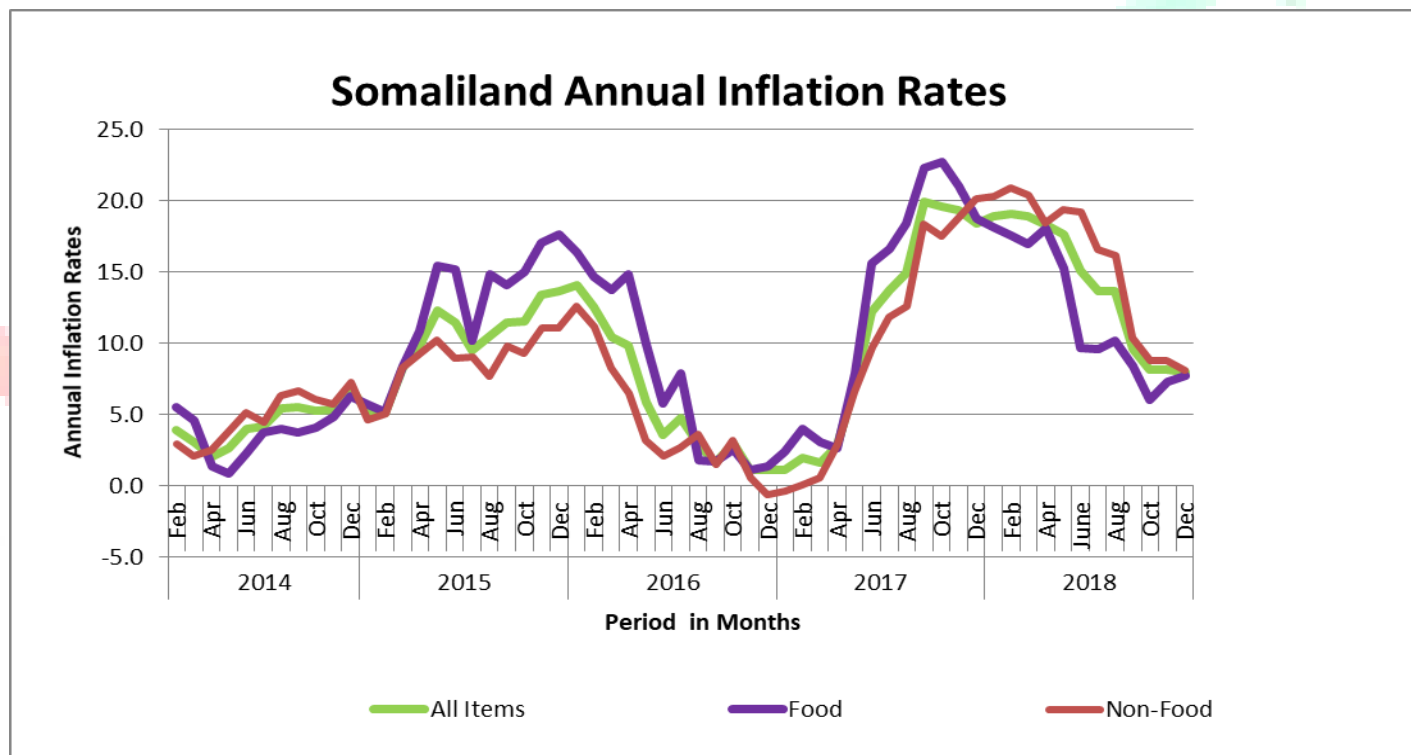
Graph 2: Somaliland Headline Monthly Inflation rates for 3 major components, Dec 2017- Dec2018:



CPI Unit/Economic Section/CSD.

Graph 3: Somaliland Annual Inflation Rates

Graph 3 also demonstrates that for the entire period from Feb 2014 to December 2018, it measured annual inflation, which has a positive impact on the households more especially those with a fixed income together with those with very low income and without any savings at all. The same graph shows that food prices were instable compared to non-food prices. Food prices changed more frequently and sharply mostly due the seasonal factors and exchange rate.



CPI Unit/Economic Section/CSD.

Note: The CPI compilation from December 2018, still the market prices scores on the high trend fluctuation of Food items. The depreciation of Somaliland shilling still high 9865/=SLSH per one dollar.

ANNEX1: Somaliland Consumer Price Index (CPI) and Inflation for Core, Food Crops, & EFU: (January 2017 – Dec 2018).

GROUP	Core	Food Crops	EFU	Headline index	Core	Food Crops	EFU	Head-Line inflation	Core	Food Crops	EFU	Head-Line inflation
Weights	814.08	95.33	90.59	1000.000	Monthly % Change				Annual % Change			

Calendar Years													
2017	2016	134.61	136.88	115.79	133.12	1.9	-0.1	-1.5	1.4	4.1	-11.4	-9.1	1.1
	2018	169.45	187.02	158.85	170.17	0.2	1.7	1.4	0.4	8.3	3.4	11.4	8.0
	Jan	135.29	136.63	116.66	133.73	0.4	-0.2	0.7	0.4	3.5	-9.7	-7.0	1.1
	Feb	135.67	143.44	112.86	134.34	0.3	5.0	-3.3	0.5	3.6	-4.1	-6.3	2.0
	Mar	135.74	151.48	113.98	135.27	0.0	5.6	1.0	0.7	2.5	-1.0	-3.8	1.6
	Apr	137.35	153.27	117.11	137.04	1.2	1.2	2.7	1.3	3.3	-1.6	4.4	2.8
	May	140.99	158.16	122.10	140.91	2.5	3.2	4.3	2.7	7.2	2.8	13.0	7.1
	Jun	144.99	163.58	127.70	145.20	2.8	3.4	4.6	3.0	12.1	6.0	22.3	12.2
	Jul	145.92	164.07	131.72	146.36	1.0	1.3	3.2	1.1	12.7	14.3	25.8	13.8
	Aug	148.07	160.73	133.05	147.91	1.5	-2.0	1.0	1.1	13.1	23.3	24.8	14.9
	Sep	153.45	175.88	133.38	153.77	3.6	9.4	0.2	4.0	17.4	33.5	30.3	19.9
	Oct	155.42	181.83	139.31	156.48	1.3	3.4	4.4	1.8	19.1	26.9	15.0	19.6
2018	Nov	155.89	179.53	139.30	156.64	0.3	-1.3	4.4	0.1	18.0	31.1	18.5	19.4
	Dec	156.54	180.80	143.00	157.63	0.4	0.7	2.7	0.6	16.3	32.1	23.5	18.4
	Jan	158.09	181.30	142.62	158.90	1.0	0.3	-0.3	0.8	17.0	32.7	22.2	18.9
	Feb	159.21	180.98	143.51	159.86	0.7	-0.2	0.6	0.6	17.5	26.2	27.1	19.1
	Mar	159.53	186.38	143.52	160.64	0.2	3.0	0.6	0.5	17.7	23.0	25.9	18.9
	Apr	161.87	184.50	138.84	161.95	1.5	-1.0	-3.7	0.8	18.0	20.4	18.0	18.3
	May	163.91	190.00	153.30	165.43	1.3	3.0	10.4	2.2	16.5	20.1	25.5	17.6
	Jun	165.28	191.38	153.81	166.73	0.8	0.7	0.3	0.7	14.3	17.0	20.5	15.1
	Jul	166.14	180.59	152.93	166.32	-0.5	-5.6	-0.6	-0.2	13.9	10.1	16.1	13.6
	Aug	168.03	182.28	153.96	168.12	1.1	0.9	0.7	1.1	13.5	13.4	15.7	13.7
	Sep	168.47	182.66	152.55	168.47	0.3	0.0	-0.5	0.2	9.9	3.9	14.4	9.6
	Oct	168.75	184.73	158.10	169.24	0.1	1.1	3.6	0.5	8.6	1.6	13.5	8.2
	Nov	169.16	183.96	156.68	169.44	0.3	-0.4	-0.9	0.1	8.5	2.5	12.5	8.2
	Dec	169.45	187.02	158.85	170.17	0.2	1.7	1.4	0.4	8.3	3.4	11.4	8.0

Source: CPI Unit/Economic Section/Central Statistics Department.

More explanatory see: Annexes

ANNEX 1: Somaliland Consumer Price Index (CPI) by COICOP Division: (Jan-Dec 2012) = 100

Div.	PARTICULARS	Weight	Dec-17	Jan_18	Feb_18	Mar_18	Apr_18	May-18	Jun_18	Jul_18	Aug-18	Sep_18	Oct_18	Nov_18	Dec_18
	Headline (all items index)	1,000.000	157.59	158.90	159.86	160.64	161.95	165.43	166.73	166.31	168.12	168.47	169.24	169.44	170.17
01	Food and Non-Alcoholic Beverages	417.5	165.77	166.57	167.66	170.68	173.97	177.08	176.52	176.17	176.94	178.30	179.90	180.05	180.23
02	Alcoholic Beverages, Tobacco & Narcotics	45.57	188.49	198.70	197.05	180.20	173.22	170.91	172.16	172.37	200.67	193.30	183.55	183.07	186.64
03	Clothing And Footwear	57.33	151.17	150.60	151.14	151.56	157.07	162.66	165.18	166.08	166.57	167.37	167.95	167.99	169.83
04	Housing, Water, Electricity, Gas and other Fuels	141.02	168.71	168.88	169.88	169.81	167.60	172.41	176.29	175.42	176.08	176.40	179.53	179.20	180.53
05	Furnishings, Household Equipment and Routine Household Maintenance	55.49	138.98	139.12	138.69	139.54	143.69	146.42	146.58	175.42	148.20	149.23	150.31	151.90	152.57
06	Health	25.55	161.57	162.85	164.57	161.82	166.70	168.58	168.82	148.02	169.35	169.49	169.49	169.50	169.52
07	Transport	88.51	115.81	116.12	117.55	118.63	112.89	122.55	125.02	122.05	122.05	121.59	122.24	121.98	123.10
08	Communication	29.93	146.19	156.18	156.44	158.62	170.03	170.47	180.90	180.90	180.90	181.06	181.56	181.48	181.72
09	Recreation and Culture	22.46	144.30	143.76	145.27	146.67	146.07	149.73	151.86	151.86	151.86	151.97	151.71	152.18	152.26
10	Education	36.88	143.88	145.15	145.15	145.15	149.77	150.43	150.43	150.43	150.43	150.43	149.10	149.10	149.46
11	Restaurants and Hotels	33.52	154.84	156.58	156.34	157.48	159.23	160.00	160.47	160.32	160.45	161.81	162.11	163.87	163.87
12	Miscellaneous Goods and Services	46.25	155.03	155.59	160.51	161.87	157.14	160.48	164.21	163.65	164.70	163.68	163.50	165.04	165.70

Source: CPI unit/Economic section/Central Statistics Department.

ANNEX 2: Somaliland Consumer Price Indices and Inflation Rates for Food & Non-Food (Dec_ 2017–Dec_ 2018)

GROUP	Weights	Dec_17	Jan_18	Feb_18	Mar_18	Apr_18	May_18	Jun_18	Jul_18	Aug_18	Sep_18	Oct_18	Nov_18	Dec_18
Headline Index	1000.0000	157.59	158.90	159.86	160.64	161.95	165.43	166.73	166.31	168.12	168.47	169.24	169.44	170.17
Food	387.0796	166.11	167.37	168.42	169.50	173.40	176.59	175.33	174.74	175.51	176.85	176.85	178.74	178.94
Non - Food	612.9204	152.27	153.56	154.46	155.05	154.62	158.39	161.30	160.99	163.45	163.18	163.18	163.57	164.63
Monthly % Change														
Headline		0.6	0.8	0.6	0.5	0.8	2.2	0.8	-0.2	1.1	0.2	0.5	0.1	0.4
Food		-0.3	0.8	0.6	0.6	2.3	1.8	-0.7	-0.3	0.4	0.8	0.0	1.1	0.1
Non - Food		1.3	0.8	0.6	0.4	-0.3	2.4	1.8	-0.2	1.5	-0.2	0.0	0.2	0.6
Annual % Change														
Headline		18.4	18.9	19.1	18.9	18.3	17.6	15.1	13.6	13.7	9.6	8.2	8.2	8.0
Food		18.7	18.1	17.5	16.9	18.1	15.3	9.7	9.6	10.2	8.4	6.0	7.3	7.7
Non - Food		20.1	20.3	20.9	20.4	18.4	19.4	19.2	16.6	16.2	10.4	8.8	8.8	8.1

Source: CPI unit/Economic section/Central Statistics Department.

ANNEX 3: Somaliland Monthly Inflation by COICOP Divisions (Nov2018-Dec 2018).

		Dec_17	Jan_18	Feb_18	Mar_18	Apr_18	May_18	Jun_18	Jul_18	Aug_18	Sep_18	Oct_18	Nov_18	Dec_18
Div.	PARTICULARS													
	Headline	0.6	0.8	0.6	0.5	0.8	2.2	0.8	-0.2	1.1	0.2	0.5	0.1	0.4
01	Food and Non-Alcoholic Beverages	0.5	0.7	1.8	1.9	1.8	-0.3	-0.2	0.4	0.8	0.9	0.1	0.1	0.5
02	Alcoholic Beverages, Tobacco & Narcotics	5.4	-0.8	-8.5	-3.9	-1.3	0.7	0.1	16.4	-3.7	-5.0	-0.3	1.9	5.4
03	Clothing And Footwear	-0.4	0.4	0.3	3.6	3.6	1.5	0.5	0.3	0.5	0.3	0.0	1.1	-0.4
04	Housing, Water, Electricity, Gas and other Fuels	0.1	0.6	0.0	-1.3	2.9	2.3	-0.5	0.4	0.2	1.8	-0.2	0.7	0.1
05	Furnishings, Household Equipment and Routine Household Maintenance	0.1	-0.3	0.6	3.0	1.9	0.1	19.7	-15.5	0.7	0.7	1.1	0.4	0.1
06	Health	0.8	1.1	-1.7	3.0	1.1	0.1	-12.3	14.4	0.1	0.0	0.0	0.0	0.8
07	Transport	0.3	1.2	0.9	-4.8	8.6	2.0	-2.4	0.0	-0.4	0.5	-0.2	0.9	0.3
08	Communication	6.8	0.2	1.4	7.2	0.3	6.1	0.0	0.0	0.1	0.3	0.0	0.1	6.8
09	Recreation and Culture	-0.4	1.1	1.0	-0.4	2.5	1.4	0.0	0.0	0.1	-0.2	0.3	0.1	-0.4
10	Education	0.9	0.0	0.0	3.2	0.4	0.0	0.0	0.0	0.0	-0.9	0.0	0.2	0.9
11	Restaurants and Hotels	1.1	-0.2	0.7	1.1	0.5	0.3	-0.1	0.1	0.8	0.2	1.1	0.0	1.1
12	Miscellaneous Goods and Services	0.4	3.2	0.8	-2.9	2.1	2.3	-0.3	0.6	-0.6	-0.1	0.9	0.4	0.4

Source: CPI unit/Economic section/Central Statistics Department.

ANNEX 4: Somaliland Annual Inflation by COICOP Divisions (Dec_2017- Dec_ 2018).

PARTICULARS

Div	PARTICULARS	Dec_17	Jan_18	Feb_18	Mar_18	Apr_18	May_18	Jun_18	Jul_18	Aug_18	Sep_18	Oct_18	Nov_18	Dec_18
	Headline	18.4	18.9	19.1	18.9	18.3	17.6	15.1	13.6	13.7	9.6	8.2	8.2	8.0
01	Food and Non-Alcoholic Beverages	18.2	17.4	16.8	17.6	18.4	15.3	10.1	9.5	10.4	9.3	8.0	8.0	8.7
02	Alcoholic Beverages, Tobacco & Narcotics	17.9	21.0	17.5	7.4	-3.6	3.8	4.4	3.0	18.9	-21.1	-24.7	-5.9	-1.0
03	Clothing and Footwear	20.6	18.4	17.7	15.8	19.0	22.5	23.2	20.5	20.4	19.1	17.5	14.6	12.3
04	Housing, Water, Electricity, Gas and other Fuels	21.0	24.4	25.2	23.5	19.8	19.0	17.3	13.6	10.4	8.7	7.9	8.1	7.0
05	Furnishings, Household Equipment and Routine Household Maintenance	11.3	10.5	9.9	10.5	13.6	14.4	13.3	33.2	10.4	11.2	10.5	10.4	9.8
06	Health	6.1	12.4	14.4	8.2	11.1	10.1	8.8	-4.7	7.9	7.7	7.5	5.2	4.9
07	Transport	30.7	19.7	25.5	32.3	25.8	30.8	33.0	28.0	22.6	19.8	16.6	5.3	6.3
08	Communication	17.4	23.2	21.2	20.3	28.2	27.9	34.4	34.3	32.9	32.1	31.2	25.0	24.3
09	Recreation and Culture	42.3	40.6	18.6	18.1	16.7	17.8	17.8	16.3	11.6	8.5	7.3	5.7	5.5
10	Education	13.4	16.2	18.3	19.9	23.7	18.8	18.8	18.8	16.6	11.6	9.5	3.9	3.9
11	Restaurants and Hotels	32.7	33.0	31.5	34.5	36.0	36.1	33.9	33.6	31.5	32.8	33.8	30.6	5.8
12	Miscellaneous Goods and Services	22.0	20.2	22.0	22.9	18.9	19.3	17.8	15.8	14.9	11.0	9.2	4.2	6.9

Source: CPI unit/Economic section/Central Statistics Department.

ANNEX 5: Somaliland Consumer Price Index (CPI) and Annual Inflation for Food Crops, Other Goods, Services and Energy Fuel & Utilities:

Weights		Dec_17	Jan_18	Feb_18	Mar_18	Apr_18	May_18	Jun_18	Jul_18	Aug_18	Sep_18	Oct_18	Nov_18	Dec_18
Group														
Headline Index	1000.0000	157.59	158.90	159.86	160.64	161.95	165.61	166.73	166.31	168.12	168.47	169.24	169.44	170.17
Food Crops and Related Items	95.33	180.80	181.30	180.98	186.38	184.50	190.00	191.38	180.59	182.28	182.66	184.73	183.96	187.02
Other Goods	629.71	160.92	162.35	163.56	163.76	167.22	169.06	170.07	171.24	173.69	174.25	174.39	174.90	175.10
Services	184.37	141.39	143.57	144.32	145.10	143.61	147.29	148.93	148.68	148.70	149.22	149.13	149.58	150.16
Energy Fuel and Utilities	90.59	143.00	142.62	143.51	143.51	138.84	153.30	153.81	152.93	153.96	152.55	158.10	156.68	158.85
Monthly % Change														
Headline		0.6	0.8	0.6	0.5	0.8	2.3	0.7	-0.2	1.1	0.2	0.5	0.1	0.4
Food Crops and Related Items		0.7	0.3	-0.2	3.0	-1.0	3.0	0.7	-5.6	0.9	0.2	1.1	-0.4	1.7
Other Goods		-0.6	0.9	0.7	0.1	2.1	1.1	0.6	0.7	1.4	0.3	0.1	0.3	0.1
Services		4.5	1.5	0.5	0.5	-1.0	2.6	1.1	-0.2	0.0	0.3	-0.1	0.3	0.4
Energy Fuel and Utilities		2.7	-0.3	0.6	0.0	-3.3	10.4	0.3	-0.6	0.7	-0.9	3.6	-0.9	1.4
Annual % Change														
Headline		18.4	18.9	19.1	18.9	18.3	17.8	15.1	13.6	13.7	9.6	8.2	8.2	8.0
Food Crops and Related Items		32.1	32.7	26.2	23.0	20.4	20.1	17.0	10.1	13.4	3.9	1.6	2.5	3.4
Other Goods		15.2	14.7	15.1	14.9	15.6	14.1	11.3	11.1	11.7	7.6	6.3	8.0	8.8
Services		20.7	26.6	27.5	30.0	28.5	28.0	27.8	26.1	21.3	20.1	18.3	10.5	6.2
Energy Fuel and Utilities		23.5	22.2	27.1	25.9	18.6	25.5	20.5	16.1	15.7	14.4	13.5	12.5	11.1

Source: CPI unit/Economic section/Central Statistics Department.

ANNEX 6: Somaliland Consumer Price Indices and for Annual Food Class Inflation (Dec_2017–Dec_2018) = 100

Classes	Weights	Dec-17	Jan-18	Feb-18	Mar-18	Mar-18	Apr-18	May-18	Jun-18	Jul-18	Aug-18	Sep-18	Oct-18	Nov-18
Headline Index	1000.0000	157.59	158.90	159.86	160.64	161.95	165.61	166.73	166.31	168.12	168.47	169.24	169.44	170.17
Food Headline Annual Inflation	387.1043	18.7	18.1	17.5	16.9	18.1	15.3	9.7	9.6	10.2	8.4	6.0	7.3	7.7
Bread and cereals		11.3	10.2	10.2	11.5	12.6	10.5	8.0	9.8	7.6	8.2	6.3	6.8	7.2
Meat		21.9	23.0	22.5	21.4	23.9	16.1	-7.0	1.8	4.6	12.4	10.8	9.9	18.1
Fish and Sea Food		26.8	25.9	44.2	35.2	14.3	23.0	17.2	17.1	17.0	19.3	14.4	9.5	7.8
Milk, cheese and eggs		22.2	8.2	2.1	7.3	4.6	16.0	10.4	7.7	12.0	12.1	12.0	14.0	19.0
Oils and Fats		10.5	9.1	10.4	19.5	20.2	23.0	20.8	18.1	15.2	15.9	7.4	5.6	6.9
Fruits		36.1	35.1	23.4	20.7	21.2	18.7	16.2	7.7	10.8	9.2	3.7	2.4	5.2
Vegetables		29.3	31.0	28.4	25.0	19.7	21.3	17.7	12.1	15.5	0.0	0.0	2.5	2.1
Sugar, jam, honey, chocolate, and confectionery		24.7	27.3	27.7	23.3	23.1	11.6	14.2	6.6	4.7	2.6	2.6	0.7	-1.0
Food Products n.e.c.		15.4	17.5	16.7	19.3	17.5	20.6	18.0	14.7	15.7	11.0	11.0	7.4	5.1
Food Headline Monthly Inflation		0.6	0.8	0.6	0.5	0.8	2.2	0.8	-0.2	1.1	0.2	0.5	0.1	0.4

Source: CPI unit/Economic section/Central Statistics Department.