



# Somaliland Development Fund

8<sup>th</sup> High Level Aid Coordination

15 September 2015

Ambassador Hotel, Hargeisa

**sdf** somaliland  
development  
fund



DANIDA

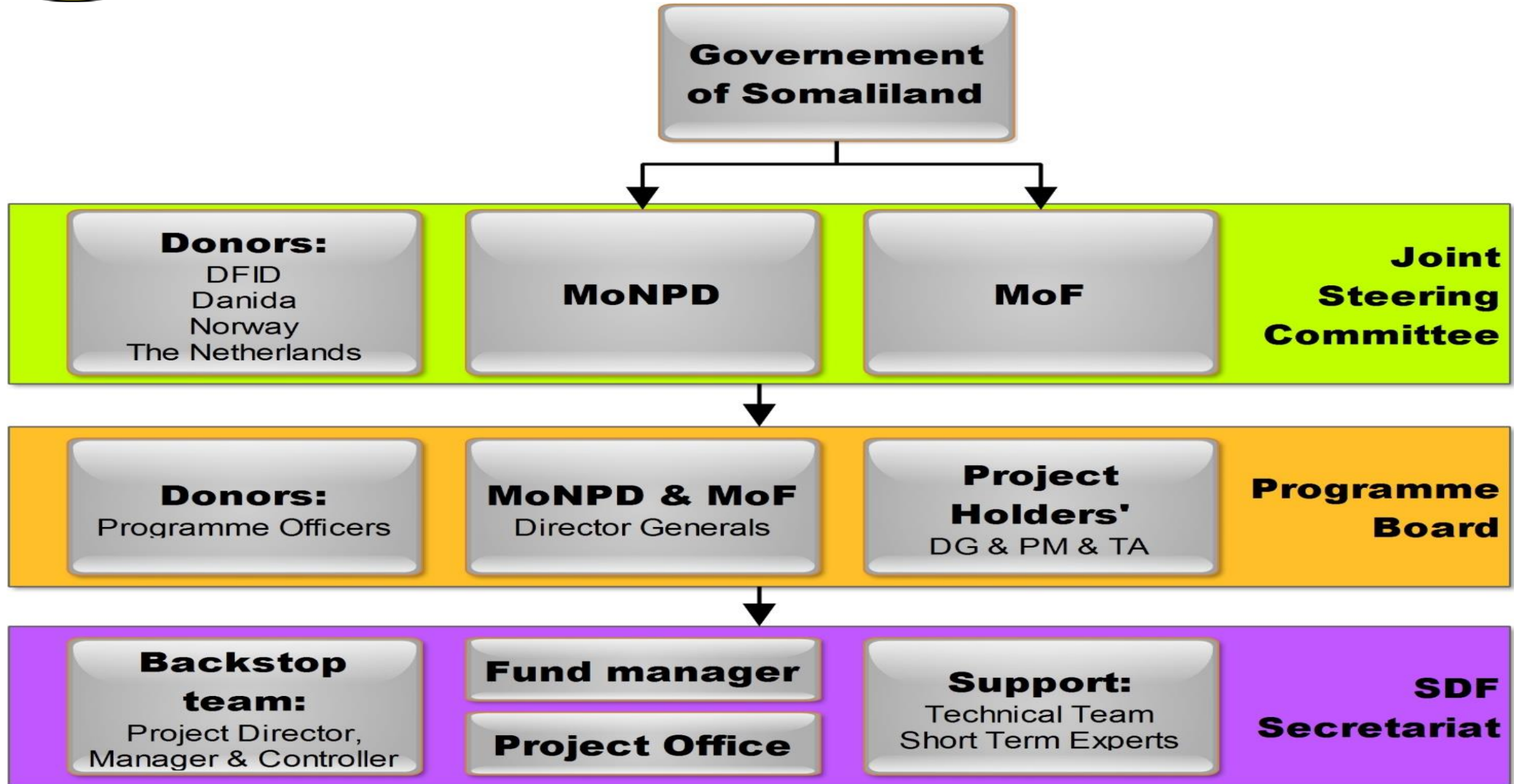


NORWEGIAN EMBASSY

Kingdom of the Netherlands



# SDF Governance





# SDF alignment to New Deal Principles

Principle	SDF Alignment
Transparency	Reporting to and feedback from the SDF governance structures
Risk	<ul style="list-style-type: none"> <li>• M&amp;E at different levels led by both GoSL and SDF donors.</li> <li>• Fiduciary risk assessment updated on a quarterly basis.</li> <li>• Conflict and risk analysis is conducted for all the projects.</li> </ul>
Use of country systems	<ul style="list-style-type: none"> <li>• SDF projects are aligned to the National Development Plan</li> <li>• SDF allocation of funds is done by the National Planning Commission</li> <li>• Strategic alignment with GoSL Ministries strategic plans</li> <li>• Implementation of projects is done by through project management teams in GoSL ministries staffed with Civil servants</li> <li>• Continuous consultations and dialogue with key government agencies.</li> </ul>
Strengthen capacities	<ul style="list-style-type: none"> <li>• At least 15% of the project funds are dedicated to capacity development.</li> <li>• Training of Civil Servants in partnership with Civil Service Institute</li> </ul>
Timely and predictable aid	<ul style="list-style-type: none"> <li>• SDF activities aligned to the PSGs objectives and milestones under the SSA.</li> <li>• Predictability by ensuring that the GoSL is aware of the available funds.</li> </ul>

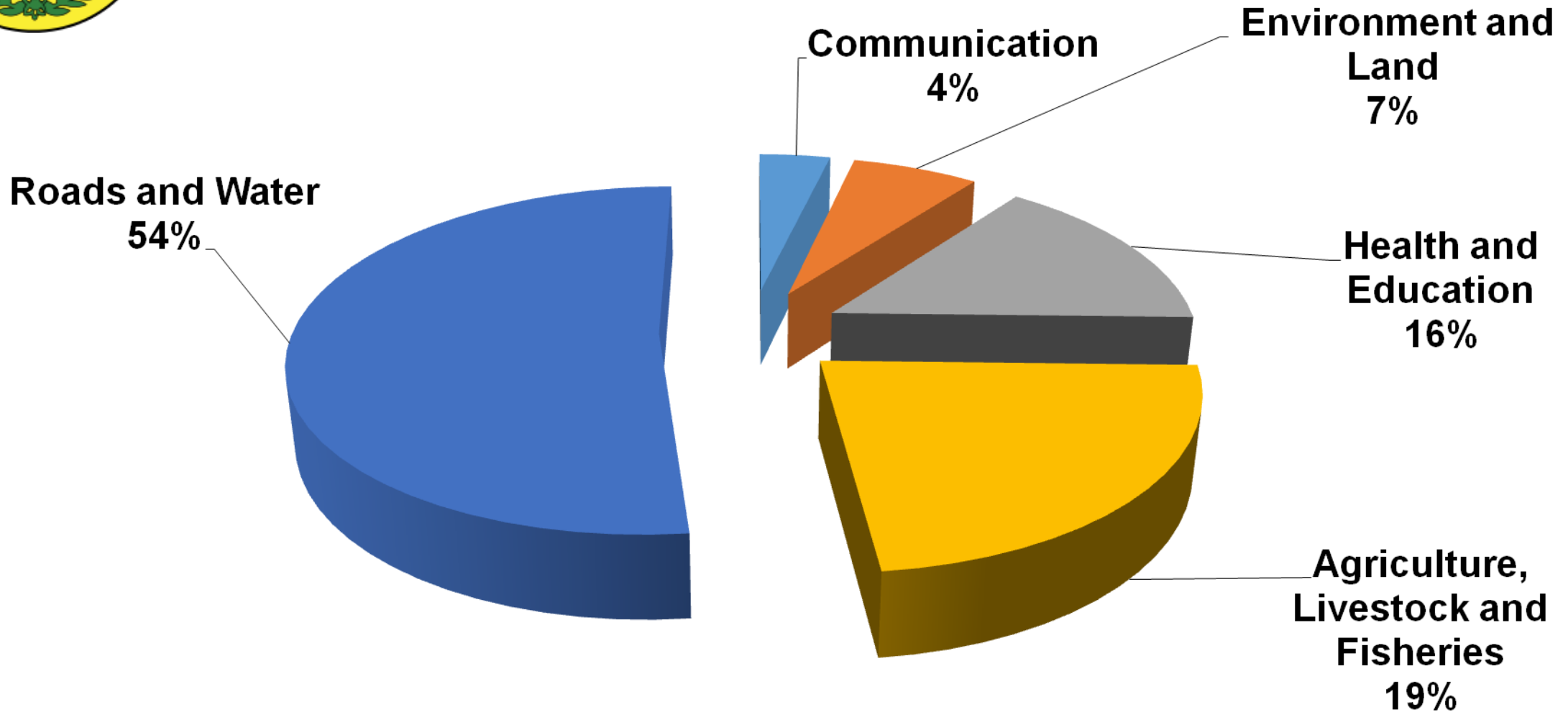


# SDF Donor Contributions

Donor Contributions to date	
Donor	Total (USD)
DFID	32,000,000
DFID CSP	465,000
DANIDA 1	20,000,000
DANIDA 2	13,000,000
Norway	4,800,000
Netherlands	5,120,000
<b>Total</b>	<b>75,385,477</b>



# Allocation of SDF Spend by Sector

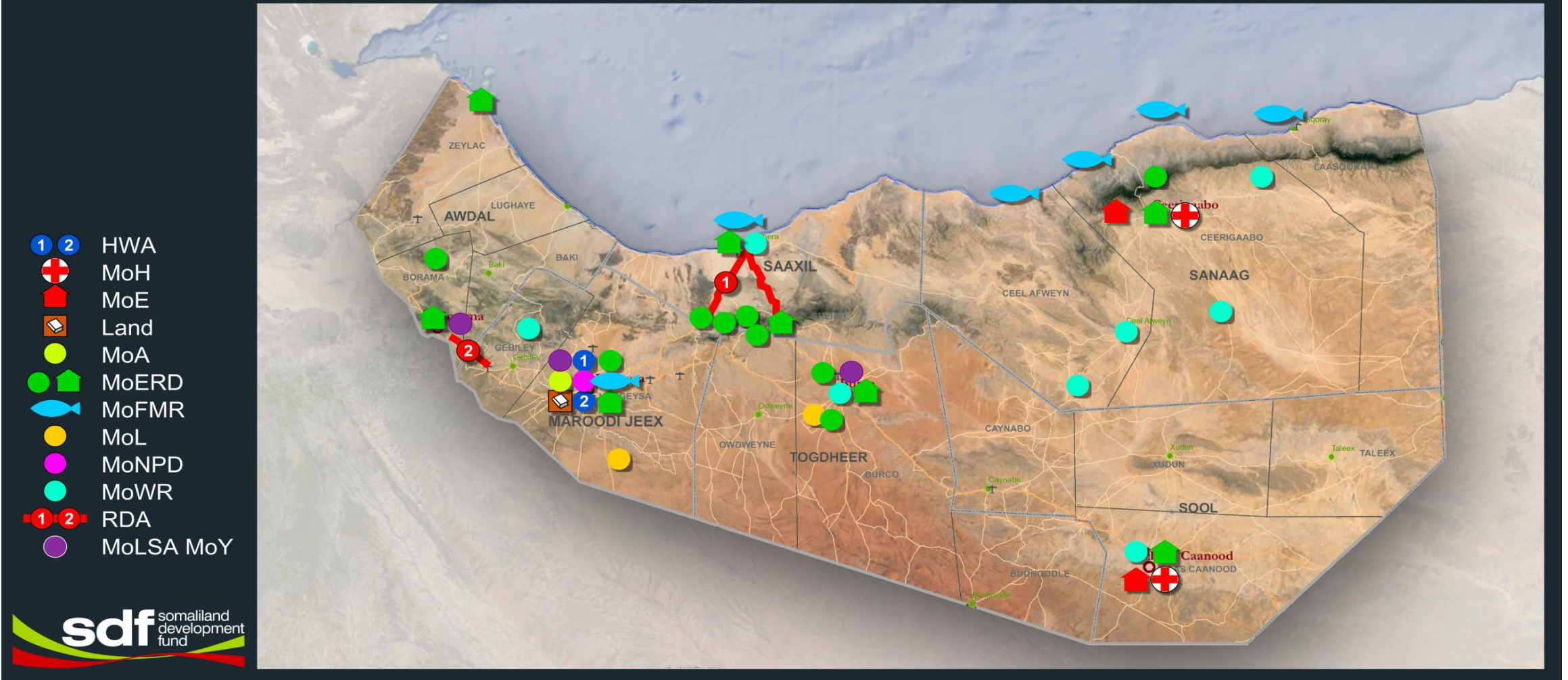


Total SDF Spend in \$ 48,816,338 across 12 Projects



# How the projects are distributed

## Somaliland Development Fund Projects' Locations







# Rehabilitation of Hamas – Berbera – Sheikh Road



**Before Rehabilitation**



**During rehabilitation**



**Road in use**



- Rehabilitation of 115 km of the Berbera corridor.
- Main transport route linking Ethiopia to the Red Sea.
- Reduced travel times by 50% on rehabilitated roads.
- Quicker movement of goods and services.
- Lower cost of doing business.





# Maroodijeh Soil and Water Conservation



**Soil erosion**



**On farm soil conservation**



**Increased moisture retention**



**Field planted with sorghum**

- Project area is 48km<sup>2</sup>.
- Food security for 10,000 people.
- Water for 175,000 livestock.
- 400 immediate jobs per day created
- Long term food sufficiency and increased incomes.



**Water for livestock**



# Support to Increased Bulk Water Supply in Hargeisa



Purchasing of water from tankers



Existing pipeline (old and dilapidated)



Pipes for construction of new pipeline



Borehole drilling in progress

- 23 km of pipeline, additional boreholes, rehabilitation of pumping station.
- Increase available water from 9m litres per day to 20 litres per day.
- Reduce the cost of water by 50% for half of Hargeisa population (460,000 people).
- Improve health outcomes by reducing water borne diseases.





# Sool and Sanaag Health and Education



## Schools

- Only 2% of children complete secondary school in Sool and Sanaag;
- In 2012 only 673 students in Sool & Sanaag completed secondary school;
- SDF will re-establish and re-equip two key secondary schools which have not been used since 1991;
- 360 children will benefit (50% girls).

## Hospitals

- Only two public hospitals in Sool & Sanaag;
- Lack of qualified personnel, equipment and drugs;
- SDF will renovate, re-equip and re-organise the hospitals; and
- Provide referral services to 750,000 people.



# Training of Civil Servants in Project Management at CSI



Participants in a training session



Participant making a presentation



Group work



Graduation event

75 civil servants trained in various aspects of Project Cycle Management



Group work